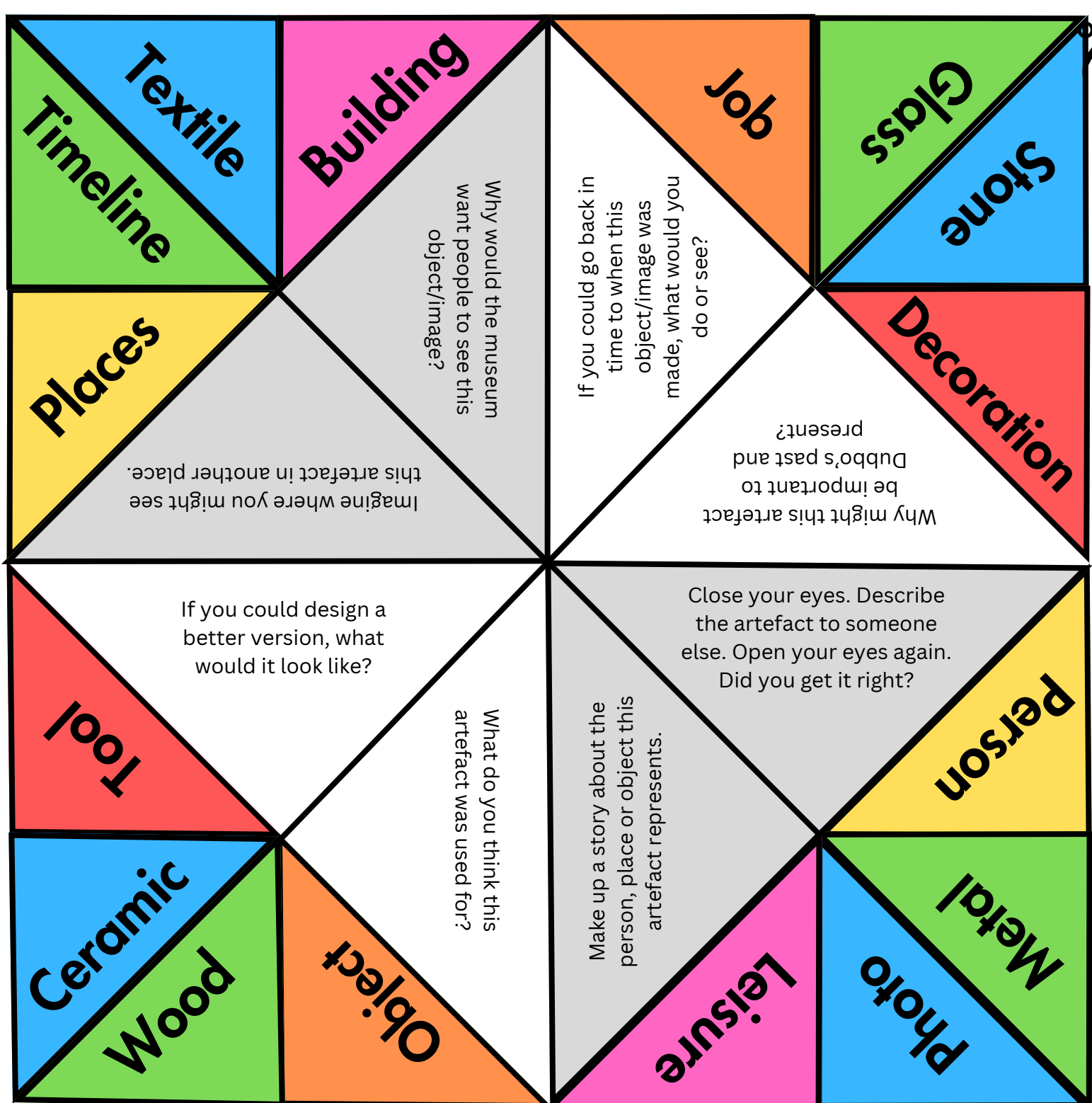
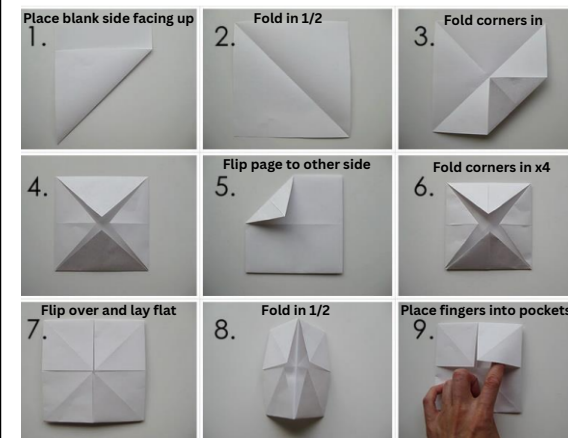


Chatterbox Museum Tour



**Cut around the square of the chatterbox before you fold

How to fold the chatterbox



10. Finished and ready to play!



How to use the chatterbox

1. Put your thumbs and forefingers into the pockets as shown above.
2. Find an object in the museum and choose one of the words that describes a type of artefact from the museum. Spell it out, opening and closing the chatterbox for each letter.
3. Choose a descriptive word from inside that matches your artefact and spell it out again.
4. Open one of the options written inside and try to answer the question!